

LC LIVING CHRIST
LUTHERAN CHURCH
4800 S CR 600 East
Plainfield, IN 46168
317-839-4800

Living Christ Connection

March 2011



FROM THE PEN OF THE VACANCY PASTOR...

The next few months will be exciting times for the members and friends of Living Christ Lutheran Church. Not only will the process be set in motion to call and receive a graduate from one of our two seminaries but action will begin and be completed for the installation of our modular classrooms which will better accommodate our growing worship and child-care programs.

Once our call documents are completed and sent on to Synod's Placement Committee they will assign whoever they believe to be the best possible graduate that will match the needs and the challenges of LCLC. That particular graduate will receive news of that assignment on "Call Day" which comes in April at his respective seminary and will as soon as possible communicate that news to us. Upon graduation in late May he will inform us of his choice to accept LCLC's call and will begin the process of setting an installation date to begin his ministry at LCLC, usually in early July. (That starting date is flexible according to the personal needs of the graduate.)

In the meantime we should have completed the task of installing the modules, preparing them for classroom and administrative use, and dedicating them to the glory of God and the advancement of proclaiming the Gospel in our corner of His Kingdom. We plan to have a "Dedication Weekend" as soon as it is advisable to have an Open House on a Saturday and a service of dedication on the following Sunday.

That will be a big weekend for the people of LCLC and for the children and parents of LCK. Much planning and work will need to be done for the weekend which will include invitations to the community, to prospective parents and children, and to prospective church members. We will need your enthusiastic support for Dedication Weekend and later on for the Installation of our new pastor.

God indeed has been good to the members and friends of our congregation.

Pastor Hessler

KNOCK KNOCK

A Joyful 'toon by Mike Waters



Ask and it will be given to you; seek and you will find; knock and the door will be opened to you.

- MATTHEW 7:7 NIV

LOOK AT WHAT IS HAPPENING AT LCLC

ASH WEDNESDAY – MARCH 9, 2011

The people of Living Christ Lutheran Church will observe the beginning of Lent with the traditional service of holy communion and the imposition of ashes on the forehead during the worship service on Ash Wednesday, 7:00 p.m.

(The imposition of ashes is completely voluntary on either the forehead or the back of the hand.)

The imposition of ashes in the forehead in the form of a cross is a fitting rite of worship for Christians who wanted to remember that "from ashes they came

and to ashes they will return." But not with the fear of the unknown but with faith in the cross that their sins are forgiven and that from ashes of their human remains God will bring to life again all who believe in His crucified and resurrected Son.

No longer are we marked with the sign of Cain but with the sign of the cross. And in that sign we believe that we shall conquer death and hell, not with power of our own but in the victory of our Lord and Savior.

LENT SEASON – 2011

Once again the Season of Lent is upon us. This is an appropriate time for Christians to focus on the Cross of our Lord Jesus Christ and remember He bore that Cross for us. He suffered and died to bear the punishment for our sins. But His sacrifice was not in vain. We find that in Him our sins are forgiven and our guilt is taken away. Our Lord's cross does all that for us. We have our own crosses to bear: sorrow and loss; worry and care; doubt and fear but in the Cross of our Lord we are given the strength to bear our crosses with faith and hope.

This year during our mid-week Lenten Vespers we will meditate on the Word of God which tells us that there were those who wanted Jesus to die on a cross.

Certainly the religious leaders who hated Jesus wanted Him to be crucified; so did Barabbas who avoided his own cross; as did Pilate who sentenced Jesus to the Cross. They and others wanted Jesus to die for their own selfish purposes, but even His own heavenly Father wanted Jesus to die because God knew that from His Son's cross would come forgiveness and life eternal for all who believed.



Worship with us this Lent during the six mid-week services on Wednesdays, 7:00 – 7:45 p.m., March 9th through April 13th and learn why it was necessary for Jesus to die and how we find life in His death.

SOMETHING TO PONDER

Did you read this month's Lutheran Witness Magazine? One of the articles in the Indiana section of the magazine is an article written by Larry Jung. In his article, Larry discusses the giving of the churches in the Indiana District. As of mid-December 2010, 25% of the churches in the district had not sent any support to our district. Although he does not mention it in this article I know, from past experience, that a far greater percentage of churches in the district do not send a full tithe. These monies are used to support our district and their mission to grow the Lord's Kingdom within the district and throughout the world.

You need to know but that in the early years of LCLC we, in a voter's assembly, prayerfully made a commitment to the Lord not only to try to grow his Kingdom in our corner of the world, but also to support our district in their efforts. Since

that time we have sent a full tithe to the district for that purpose. Sometimes we perceive that we are in difficult times, yet through the adversities we have had, the Lord has always provided us just what we need to continue the mission he has lead us to . Make no mistake! The Lord has blessed us in many ways. If you should ever doubt that, look around at the blessings we have: Pastor and Giesla Hellert, our Christian family, and in a short time he will again bless us with a new Pastor. As we prepare for this new chapter in our history, please remember that we must always be good stewards of all the gifts the Lord gives us and continue to praise and thank him.

Declare his glory among the nations, his marvelous works among all the peoples!
[1 Chronicles 16:24](#)

~~~~~

## LIVING CHRIST LUTHERAN CHURCH 2011 STEWARDSHIP CAMPAIGN

This month we kick-off the Living Christ Lutheran Church Stewardship campaign for 2011-2012, "Saved to Give, Give to Grow in Christ". During this Lenten season we ask that every individual contemplate and appreciate the great sacrifice that Jesus has given to us. As His stewards, we may not be of the world, but are in the world. We are compelled to give of ourselves for others, requiring nothing in return. We pray that through our efforts of service to His mission here on Earth and to one another, we can give each person the chance to meet Jesus and accept Him as their savior. Through our Christ-centered and Gospel-driven lives we are the light to the rest of the world. Freely and prayerfully give of yourself in the coming year; your time, your talents and your treasures, bestowed upon you by God in His service.

The Stewardship committee will be conducting in-service informational presentations after a short bible lesson, or "First Reading" during the church service starting March 13<sup>th</sup> and continuing each Sunday until April 3<sup>rd</sup>. This will give everyone a chance to hear our message of our challenges in the coming year and how we can affect the changes coming to the Lord's mission at Living Christ Lutheran Church. Prayerfully commit to our continuing efforts here at our church. On April 10<sup>th</sup> will be Commitment Sunday, where we will place our commitments to God's mission on earth and consecrate them on His altar. Join us for a Commitment Luncheon after the service to celebrate our pledge to His service here at Living

Christ Lutheran Church in Plainfield, Indiana.

### **GOD'S STEWARDS ARE IN THE WORLD, BUT NOT OF THE WORLD.**

God's stewards recognize that the Lord sets them apart from the world and by the transforming power of the Gospel sends them into the world to live out the Gospel.

John 16:33 "I have told you these things, so that in me you may have peace. In this world you will have trouble. But take heart! I have overcome the world."

### **GOD'S STEWARDS ARE SERVED AND SERVING.**

God's stewards recognize that their stewardship involves a Gospel-powered style of life which is demonstrated in servanthood within all the arenas of life.

John 13:15-17 "(Jesus said :) I have set you an example that you should do as I have done for you. I tell you the truth, no servant is greater than his master, nor is a messenger greater than the one who sent him. Now that you know these things, you will be blessed if you do them."

LCLC Stewardship Board  
[stewardshipchairperson@livingchristlutheran.com](mailto:stewardshipchairperson@livingchristlutheran.com)

Bill Schini, Chair, (317)837-7593  
Shawn & Melissa Bennett  
Brian & Kelly Meyer  
David & Anita Ellis

Attention!

Attention!

Attention!

## A NEW OPPORTUNITY COMING SOON



The Church Council has approved a program to provide electronic giving possibilities. This program – Simply Giving -- is provided by Vanco Services through Thrivent Financial Bank and gives our members the opportunity to give their contributions to Living Christ through an electronic transfer of funds from a member's account to the church's bank account. This would allow members who attend every Sunday as well as members who are not able to attend services to give on a regular basis. Providing an alternative to frequent check writing or having the cash on hand, this program gives an avenue for the church to receive contributions. Your contributions can be made on a weekly, bi-weekly, or monthly

basis. Tracking your contribution is done by you through your bank statement and reported to the church for recording by Vanco. You would be able to continue to put your offering envelopes in the offering plate (as a witness to those around you). Cards indicating "I am giving electronically" would be provided for your use. Evelyn Benning has been appointed to serve as an Assistant to the Financial Secretary to implement this program at Living Christ. If you are interested in considering this opportunity, please see her to get authorization forms and answers to FAQ's. This information is also available on the "Sign-Up Table" across from the restrooms in the lobby.



Beginning Sunday, March 6 the Evangelism Committee would like to encourage our members to wear a name tag to help in two ways:

- 1) To get know each other by name (Some of us know each other by faces we see each Sunday but are not able to identify that person by name.)

## NAME TAGS

- 2) To get ready for our new pastor and his getting acquainted with each of us by name.



The name tags are in alphabetical order in the lobby by the office. Please pick up yours and help everyone get to know you by name. As you leave, you may leave it in the basket for use for the next time.

## A LENTEN CHALLENGE



I was thinking the other day how certain Christians give up something they enjoy for Lent. The idea occurred to me that Lent could also be a time to add something to our routine. Some of you may remember the Lenten Challenge we had at Living Christ several years ago. With the spirit of "adding something good" to our lives, I would like to initiate the challenge again.

I will be handing out sheets every Sunday, and hope you will participate.

You will receive points daily by doing such things as drinking six glasses of water,  eating five fruits or vegetables, exercising, wearing seatbelts, and not using cell phones when driving. Even a  good laugh is

worth a point a day.



You will also earn points for reading the Bible, praying, and participating in any activity with a church group.

I will also have a surprise optional bonus activity every week. We will start March 6th. Prizes will be awarded and winners will be announced at the Easter breakfast. If we have enough participants, I will also have a weekly winner. So put on your walking shoes, grab your bible, and **join the Lenten challenge! Everyone can participate!**

If you have any questions, don't hesitate to call me .

Mary McMullen  
834-0834

---

## LADIES OF LIFT (ALL LIVING CHRIST LADIES) LIFT MEETING SATURDAY MARCH 5TH -9:30AM MEETINGS HAVE CHANGED TO THE FIRST SATURDAY OF THE MONTH

---

### **Valentine's Day Party at Cypress Manor**

Several of our members took time on Saturday, February 12<sup>th</sup> to host a Bingo Party with Valentine Treats and Gifts for the residents at Cypress Manor (formerly known as the Hendricks County Home) in Danville. Under the guidance of Alice Stanifer, time for Bingo with many prizes, singing – "Let Me Call You Sweetheart" and "I Love to Tell the Story", party food, Valentines, cuddly animals, and a gift package for each resident filled the afternoon. Donations had been given to share with the residents there – a cozy blanket, personal hygiene items (deodorant, toothpaste & toothbrush, shampoos and conditioners, lotions, etc),

word search books and note paper and pens, and other items.

This afternoon is organized each year by LIFT (Ladies in Fellowship Together) to help share our love to the residents there at Cypress Manor – a time when people who are destitute many times are not remembered. Extending our love and gifts with this activity has been a way for our congregation to be of service to people in need. A thank-you to those who made donations, who were able to take time to be involved that day, and who helped in any other way to make this day a time for the residents at Cypress Manor to know we care.

## COMINGS AND GOINGS

**Bill and Sarah Reed** have been granted a peaceful transfer to Our Shepherd in Avon  
**Eric Myers** has been granted a peaceful transfer to Calvary in Greenwood.



### Acolyte Schedule

| March      |                              |          |
|------------|------------------------------|----------|
| 3/6 w/com  | Morgan Keefer & Kara Beasley | 539-6302 |
| 3/13       | Kara Beasley                 | 831-0286 |
| 3/20 w/com | Shannon Schini-Fields        | 837-7593 |
| 3/27       | Chloe Herbert                | 839-7505 |
|            |                              |          |



### Usher Schedule

| March      |                               |                          |
|------------|-------------------------------|--------------------------|
| 3/6 w/com  | Ron Miller<br>Bill Fant       | 839-4483<br>203-5052     |
| 3/13       | Bob Sendelweck<br>Scott Burke | 834-1382<br>416-7755     |
| 3/20 w/com | Bill Reed<br>Charles Pierce   | 289-9176<br>272-2250     |
| 3/27       | Brian Meyer<br>Glen Riechmann | 838-0416<br>765-522-3290 |
|            |                               |                          |

**Ushers or Acolytes, If you cannot serve as scheduled, please trade with someone.**

Questions can be addressed to Dick Veirs, Elder, at 837-8901 or [dick2267@yahoo.com](mailto:dick2267@yahoo.com).

| Income/Expense         |                  |                  |  |                        |                  |                  |
|------------------------|------------------|------------------|--|------------------------|------------------|------------------|
| Jan. 2011              | LCLC             | LCK              |  | Year to Date           | LCLC             | LCK              |
| <b>Income</b>          |                  |                  |  | <b>Income</b>          |                  |                  |
| Envelope/Bld Fund/Loan | \$ 10,982        | -                |  | Envelope/Bld Fund/Loan | \$ 10,982        | -                |
| LCK (Bld & Maint.)     | \$ 6,000         | -                |  | LCK (Bld & Maint.)     | \$ 6,000         | -                |
| Farm                   | -                | -                |  | Farm                   |                  | -                |
| <b>Total Income</b>    | <b>\$ 16,982</b> | <b>\$ 34,670</b> |  | <b>Income</b>          | <b>\$ 16,982</b> | <b>\$ 34,670</b> |
| <b>Expenses</b>        | <b>\$ 17,635</b> | <b>\$ 35,367</b> |  | <b>Expenses</b>        | <b>\$ 17,635</b> | <b>\$ 35,367</b> |
| <b>Difference</b>      | <b>\$ (652)</b>  | <b>\$ (698)</b>  |  | <b>Difference</b>      | <b>\$ (652)</b>  | <b>\$ (698)</b>  |
|                        |                  |                  |  | Reserve Withdrawal     | -                | -                |
|                        |                  |                  |  | Difference             | \$ (652)         | \$ (698)         |

## FRIENDSHIP SUNDAY - MARCH 6



Living Christ will observe Friendship Sunday on March 6 with a special order of worship and a pitch-in dinner immediately following the service. Friendship Sunday is a traditional way for us to reach out to our families and friends and welcome them into our midst. We will be contacting mission prospects, inactive members, and people of the community to join with us that day in celebration of our faith and life in the Lord Jesus Christ.

Included in those whom we invite will be the parents and children of LCK who have indicated on the enrollment cards that they have no active membership in

a Christian congregation. The same invitation will be sent to the residents of the new housing complex next to our church. We will also gather the names and addresses of unchurched people whom you know and invite them also to this special service.



LCLC needs your support in this evangelistic effort. We will need help with the pitch-in dinner, mailing invitations, and attending this service yourself. The Evangelism Committee appreciates all that you will do to make this a special Sunday on the church calendar.



---

49er's Plus Irish Dinner at Claddahs at Metropolis Mall. We will be meeting on Monday, March 14 at 6:30 PM so that we

will have the opportunity to take

advantage of their 'Buy-One-Get-One-Free Special' for Fish and Chips. You can order other items at regular price.. We hope to see you there for great Christian fellowship.

---

### LUFEST 2011 – CHRIST OUR CORNERSTONE

Don't forget to make your plans to attend the 29th Annual LuFest Dinner Auction to be held at the Crowne Plaza in Historic Union Station, 123 West Louisiana Street, Indianapolis. The date is March 19<sup>th</sup> and doors open at 5:00pm. Dinner will be served at 6:00 pm and the Live Auction begins at 7:00 pm. The silent Auction booths will close between 7:30 pm and 8:30 pm.

The dinner menu for the evening includes Crowne Plaza House Salad with Champagne Vinaigrette Dressing, Petite Filet Mignon with demi glace paired with

Chicken Tuscan with tomato and basil cream sauce, White Cheddar Mashed Potatoes, Seasonal roasted vegetables, House rolls and flavored butters, Coffee (reg. and decaf), Tea, Triple Tiger Chocolate Cake alternating with Strawberry Shortcake for dessert.

Log onto the Lutheran High School website to view what is new and to get a sneak peek at items to be auctioned that evening ([www.lhsi.org](http://www.lhsi.org)). Click on Saints Shopping Online to reserve your spot today!



## *Happy Birthday*

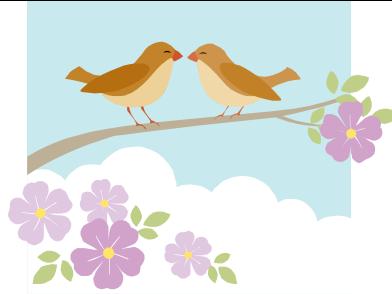
|                   |          |    |
|-------------------|----------|----|
| Jeanette Stanifer | March 3  |    |
| Gladys Bailey     | March 6  |    |
| Bill Fant         | March 8  |    |
| Connie Mathieu    | March 8  |    |
| Sandy Hoffman     | March 13 |    |
| Alice Hedley      | March 17 |    |
| Bryan Payne       | March 19 | 15 |
| Sharon Tormehlen  | March 19 |    |
| Dale Funk         | March 25 |    |



## *Happy Anniversary*

|                           |          |          |
|---------------------------|----------|----------|
| Norm & Carolyn Haus       | March 3  | 33 years |
| Bryan & Cindy Payne       | March 7  | 24 years |
| Chuck & Deb Hedley        | March 15 | 22 years |
| Richard & Claudette Perry | March 30 | 54 years |

2011



2011

**MarCh**

| <i>Sunday</i>                                                                                                                                                        | <i>Monday</i>                                                                                                            | <i>Tuesday</i>                           | <i>Wednesday</i>                                                                        | <i>Thursday</i>                                                                                                                        | <i>Friday</i> | <i>Saturday</i>                                          |
|----------------------------------------------------------------------------------------------------------------------------------------------------------------------|--------------------------------------------------------------------------------------------------------------------------|------------------------------------------|-----------------------------------------------------------------------------------------|----------------------------------------------------------------------------------------------------------------------------------------|---------------|----------------------------------------------------------|
|                                                                                                                                                                      |                                                                                                                          | 1                                        | 2                                                                                       | 3<br><i>10:00a.m</i><br><i>Morning Bible Study</i>                                                                                     | 4             | 5<br><i>9:30am</i><br><i>LIFT</i>                        |
| 6<br><i>9:15 a.m.</i> Ed. Hr.<br><i>10:00 – 10:20 a.m.</i><br>Coffee Fellowship<br>Kids Fellowship<br><i>10:30a.m.</i> Worship<br>w/ Com<br><i>Friendship Sunday</i> | 7<br><i>6:30 p.m.</i><br><i>BCE</i><br><br><i>7:00 p.m. –</i><br>Elders                                                  | 8                                        | 9<br><i>7:00 pm</i><br><b>Ash Wednesday Service</b><br>Choir Practice,<br>after service | 10<br><i>10:00a.m</i><br><i>Morning Bible Study</i><br><i>No study during Lent</i><br><br><i>6:30 p.m.</i><br>Stewardship<br>Committee | 11            | 12                                                       |
| 13<br><i>9:15 a.m.</i> Ed. Hr.<br><i>10:00 – 10:20 a.m.</i><br>Coffee Fellowship<br>Kids Fellowship<br><i>10:30a.m.</i> Worship                                      | 14<br><i>6:30 p.m</i><br>.49ER'S+ meet<br>at Claddah's Irish<br>Pub                                                      | 15<br><i>6:30 p.m.</i><br>Church Council | 16<br><i>7:00 pm</i><br><b>Lent Service</b><br>Choir Practice<br>after service          | 17<br><i>10:00a.m</i><br><i>Morning Bible Study</i><br><i>No study during Lent</i>                                                     | 18            | 19<br><i>9:00 a.m. –</i><br>Men's Breakfast<br>@ Goody's |
| 20<br><i>9:15 a.m.</i> Ed. Hr.<br><i>10:00 – 10:20 a.m.</i><br>Coffee Fellowship<br>Kids Fellowship<br><i>10:30a.m.</i> Worship<br>w/Com                             | 21<br><i>7:00 p.m.</i><br>Evangelism                                                                                     | 22                                       | 23<br><i>7:00 pm</i><br><b>Lent Service</b><br>Choir Practice<br>after service          | 24<br><i>10:00a.m</i><br><i>Morning Bible Study</i><br><i>No study during Lent</i>                                                     | 25            | 26                                                       |
| 27<br><i>9:15 a.m.</i> Ed. Hr.<br><i>10:00 – 10:20 a.m.</i><br>Coffee Fellowship<br>Kids Fellowship<br><i>10:30a.m.</i> Worship                                      | 28 <b>Newsletter<br/>Deadline</b><br> |                                          |                                                                                         |                                                                                                                                        |               |                                                          |

**Holy Communion is celebrated on the 1<sup>st</sup>, 3<sup>rd</sup>, and 5<sup>th</sup> Sunday of each month.**

## -- OVERCOMING FEAR: DIFFICULTY STARTING A FAITH CONVERSATION --



Do you find it difficult to transition into sharing your faith? You aren't the only one. In fact, many of us have difficulty striking up conversation in the first place. Everyday conversation is crucial to help us create a connection with a person before gaining entrance into his or her spiritual life. Don't just dive into the "Jesus talk." Because 1 Peter 3:15 tells us to share our hope, but to do so with gentleness and respect, we should first gain permission into a person's life before sharing our faith.

The most natural place to share your faith is within a relationship. If you are not fortunate enough to have years of friendship behind you, there are simple ways to build a rapport. Remember to start with pleasantries like "hello" and "how are you?" By gauging their response, or lack thereof, you can feel this person out before proceeding: Was this person receptive to deeper conversation? Or, did they barely respond to your "hello"? Based on their response, you will know to proceed with further dialogue or to move on and just pray for this person.

If this person seems receptive to conversation, use the "F.O.R.M." technique to help you strike up comfortable dialogue: family, occupation, recreation and motivation. When you ask someone about these fundamental topics, which are important to most of us, they will likely open up without hesitation. This will also allow you to learn where they are coming from. You can learn what is important to them and even their worldview.

If you have hesitated to share your faith in the past because you felt uncomfortable opening with theological discussion, you no doubt hesitated for good reason. Opening a conversation with theology would likely intimidate even a life-long Christian. Let's look at Jesus' style as a guide: Recall His conversation with the Samaritan woman at the well in John, chapter 4. He started by asking her for a drink, and then slowly led the discussion to faith. Jesus never pushed, but He let the discussion gradually turn to matters of the heart.

Generally, evangelism works best when it flows naturally out of relationships we have built by

showing our care and concern for others. This can be our co-workers, neighbors, life-long friends or even new friends. When God works through circumstances in a person's life-sometimes by a crisis-our friendship opens the door for our witness, and we only need to walk through that door. Often times, by showing we care, trust and comfort are developed, whereby that person will ask you questions about your faith. Just by living your faith in daily life, you will be given opportunities to share



## --- THOUGHT OF THE DAY ---

"For to us a child is born, to us a son is given, and the government will be on his shoulders. And he will be called Wonderful Counselor, [a] Mighty God, Everlasting Father, Prince of Peace." - Isaiah 9:6

## --- TIPS FOR SHARING ---

The purpose of community outreach is not so that others will view you as a good person. It is to point to Christ and give glory to God.

When asked why you are doing something nice for them, lead into sharing the Gospel by saying, "God gives us a free gift of a Savior. We want to give you a free gift as a reminder."

Then, invite them to learn more

- by meeting you for coffee.
- by attending a Christmas service with your family.

## -- PRAYER ---

Dear Heavenly Father, Thank You for sending Your Son to this world to die on our behalf so that we may spend eternal life with You in glory. We pray that Christmas 2009 is life-changing for many. Please use us to make a meaningful impact on the world around us. Help us accomplish Your work as we go out to make disciples of all nations. Show us how to reach the people in our communities. Direct our hands and feet. Provide us with the energy, resources and assistance we need to accomplish Your work. Use us to connect others to Your Son. In Jesus' powerful Name we pray and ask all these things, Amen.



4800 S CR 600 E

Plainfield, IN 46168

Phone: (317) 839-4800

[www.LivingChristLutheran.com](http://www.LivingChristLutheran.com)

### **Lutheran Media Programs**

*The Lutheran Hour* is heard on:

WIRE (91.1 FM) Sundays, 8:00 a.m.

WCBK (102.3 FM) Sundays, 8:00 a.m.

*Woman to Woman* is heard on:

WIRE (91.1 FM) Sundays, 8:00 a.m.

You can listen to these programs anytime by choosing  
Radio & TV Programs at [www.lhm.org](http://www.lhm.org).

*Worship for Shut-Ins* is seen on:

WHMB-TV Channel 40 Sundays, 10:00 a.m.